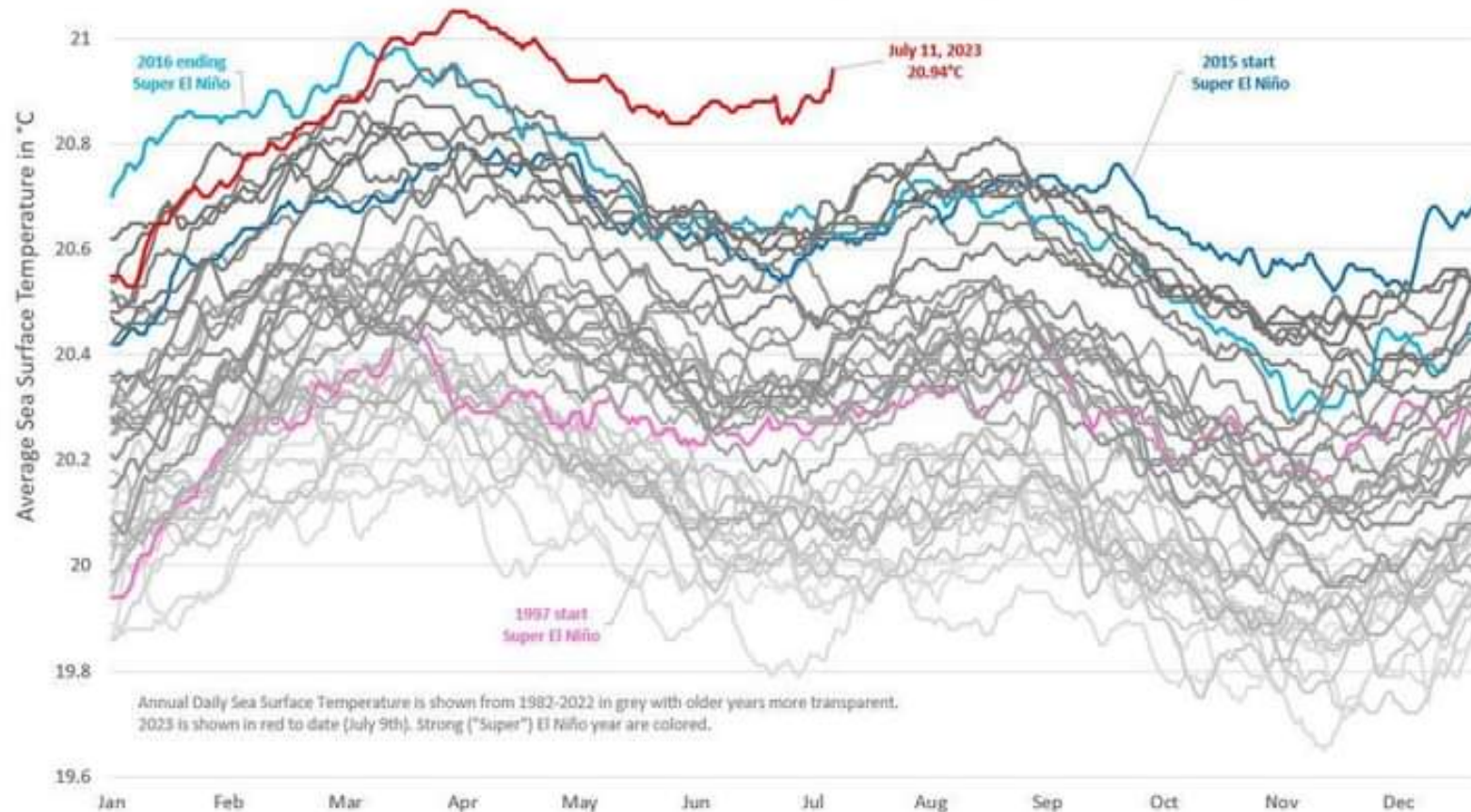


Sea Level Rise

Iver Lofving
April 9, 2024

Sea Surface Temperatures

What could a Super El Niño mean for global (60°S-60°N) Sea Surface Temperatures?

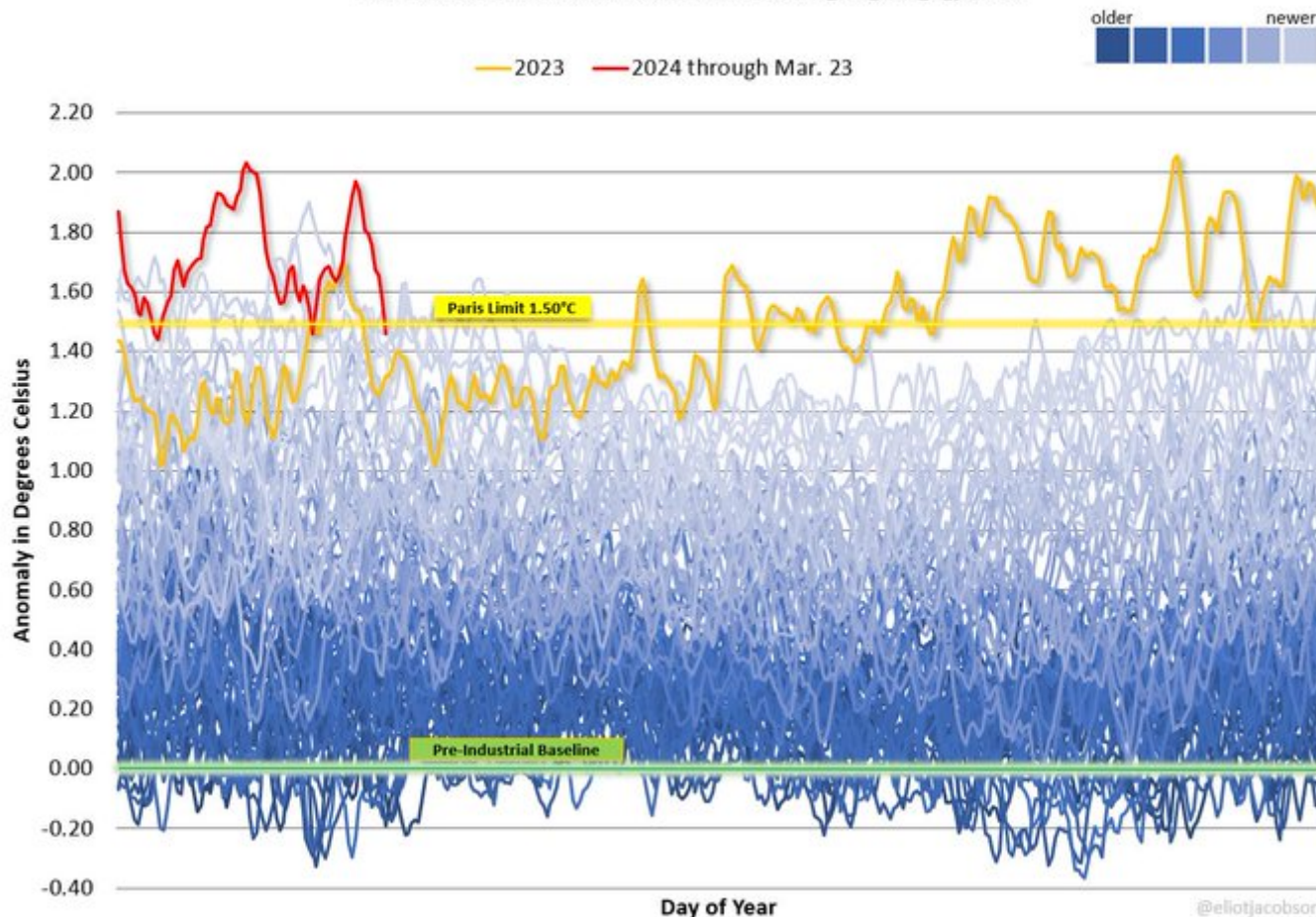


Annual Daily Sea Surface Temperature is shown from 1982-2022 in grey with older years more transparent. 2023 is shown in red to date (July 9th). Strong ("Super") El Niño year are colored.

Surface Temperature Anomalies

Global 2m Surface Temperature Anomalies: 1940 - 2024
vs. Pre-Industrial Baseline

Data: https://sites.ecmwf.int/data/climatepulse/data/series/era5_daily_series_2t_global.csv



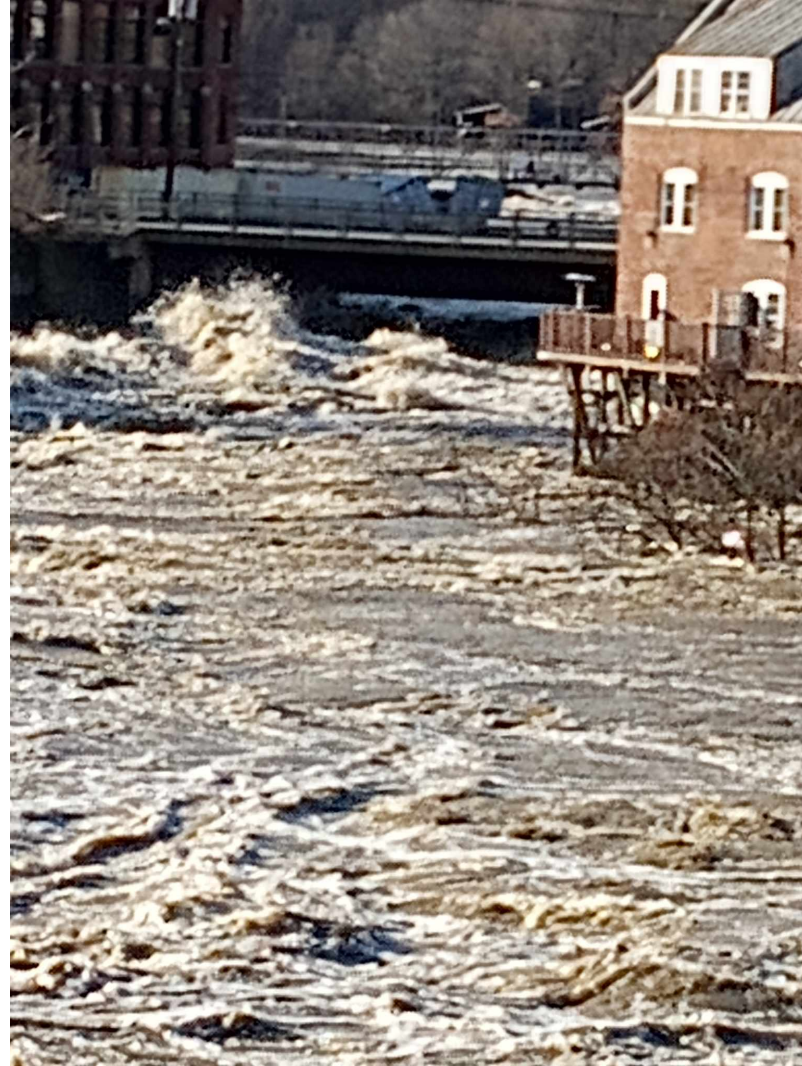
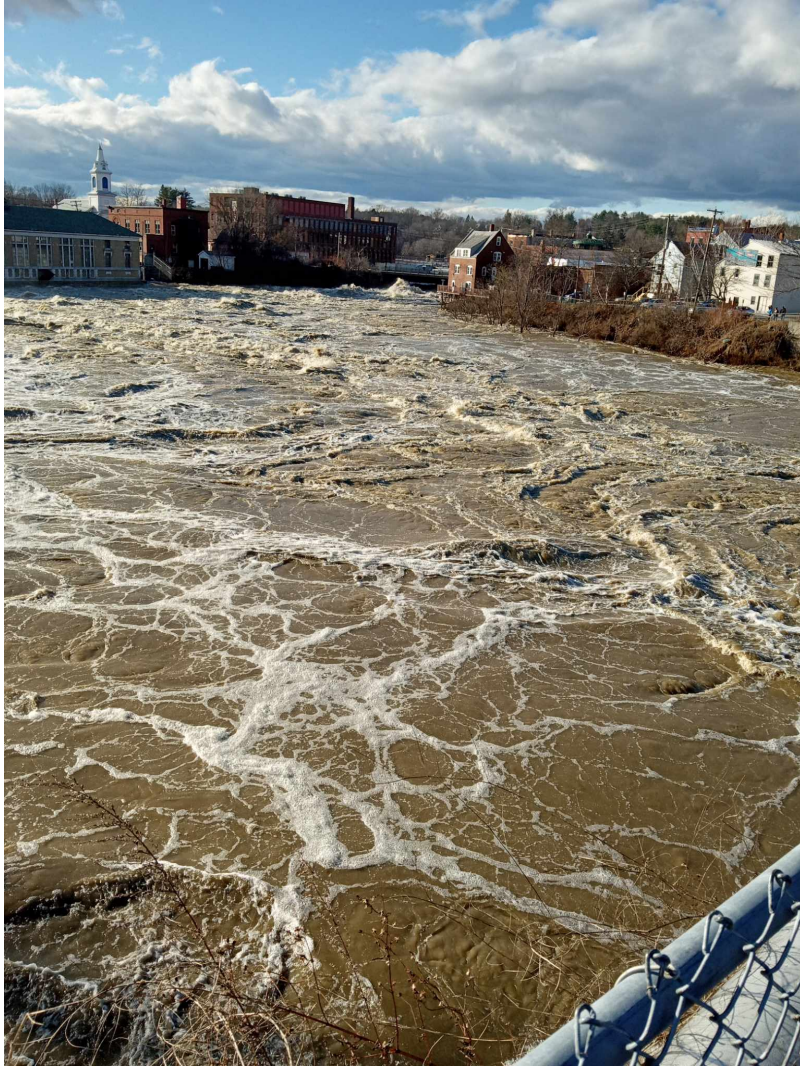
In case you're keeping track, there have been five days in 2024 when the global temperature anomaly dipped below the Paris limit of 1.5°C. Most recently, March 23rd registered 1.46°C. The current 365-day running average is 1.57°C. The climate 8-ball says: "f& %kery ahead!"

Prof. Eliot Jacobson

Ref:

<https://twitter.com/EliotJacobson/status/1772246255789363563>

Kennebec river flood, Skowhegan, ME



Swan's Island Ferry Terminal



How Boston made itself bigger

